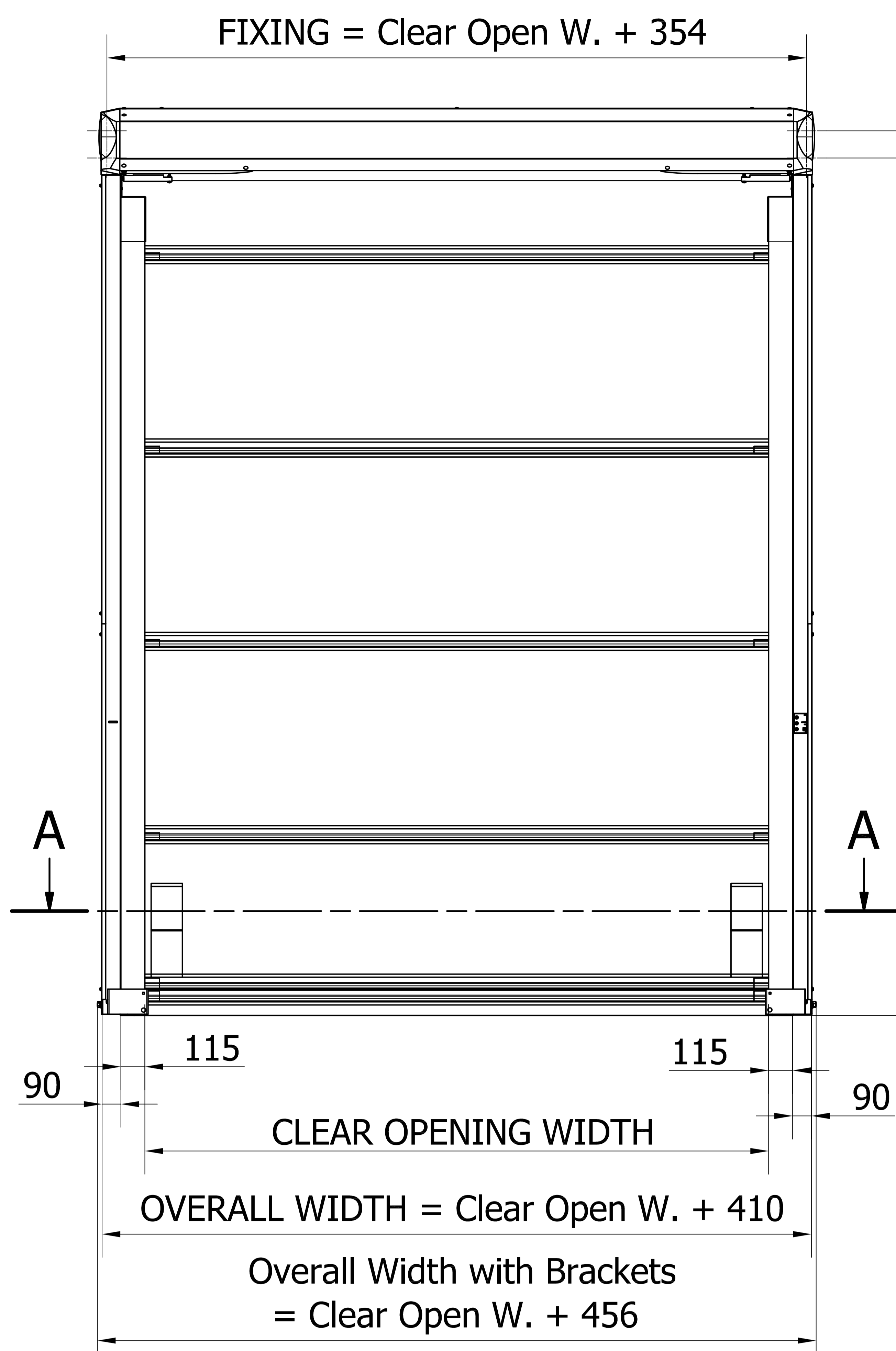
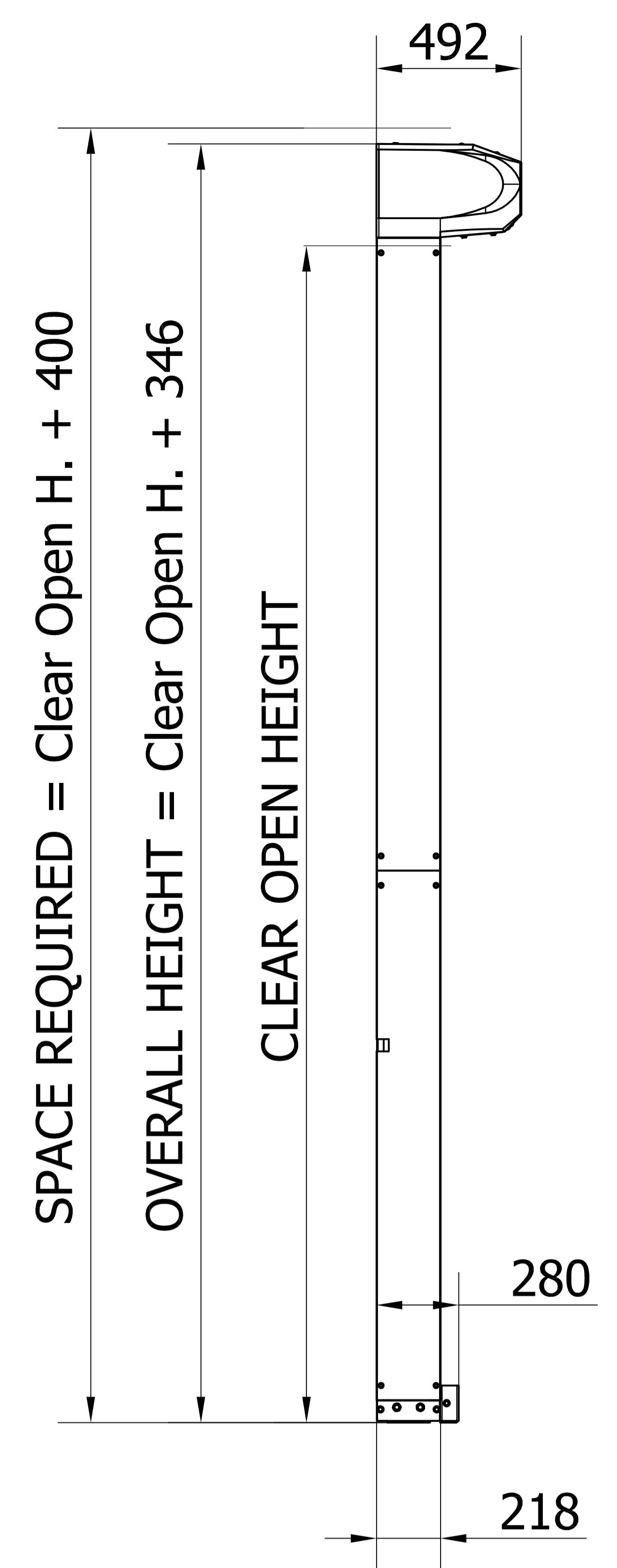


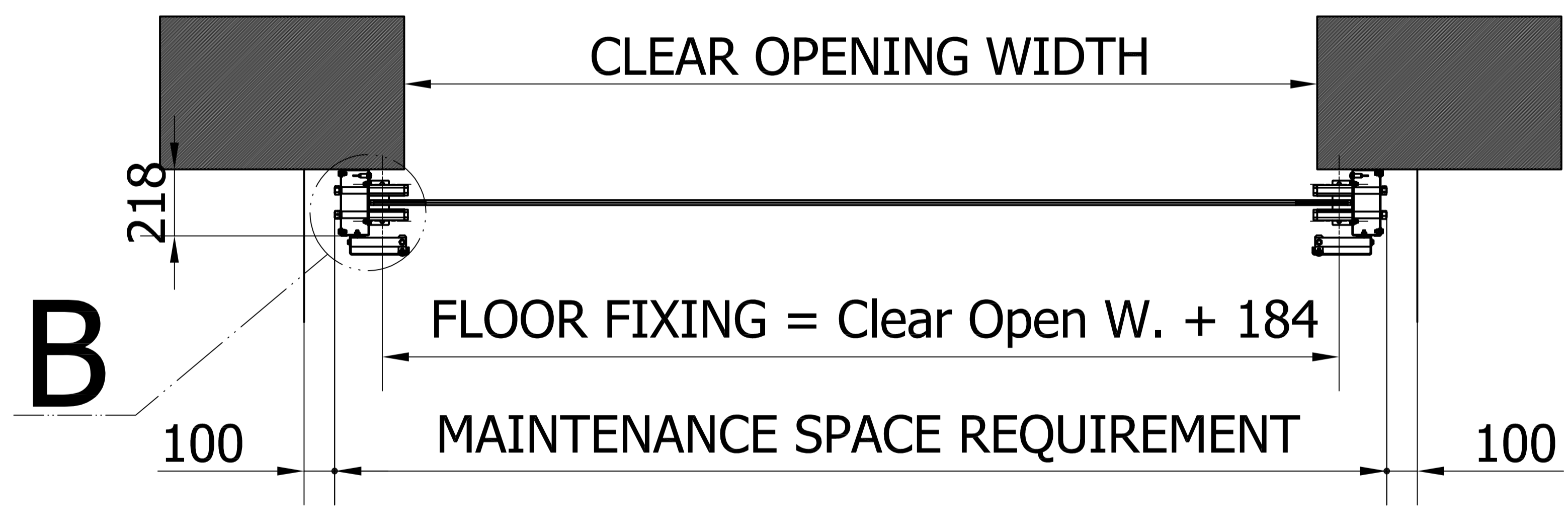
FLAT MOUNTED FIT



FIXING = Clear Open H. + 108
 FIXING = Clear Open H. + 238



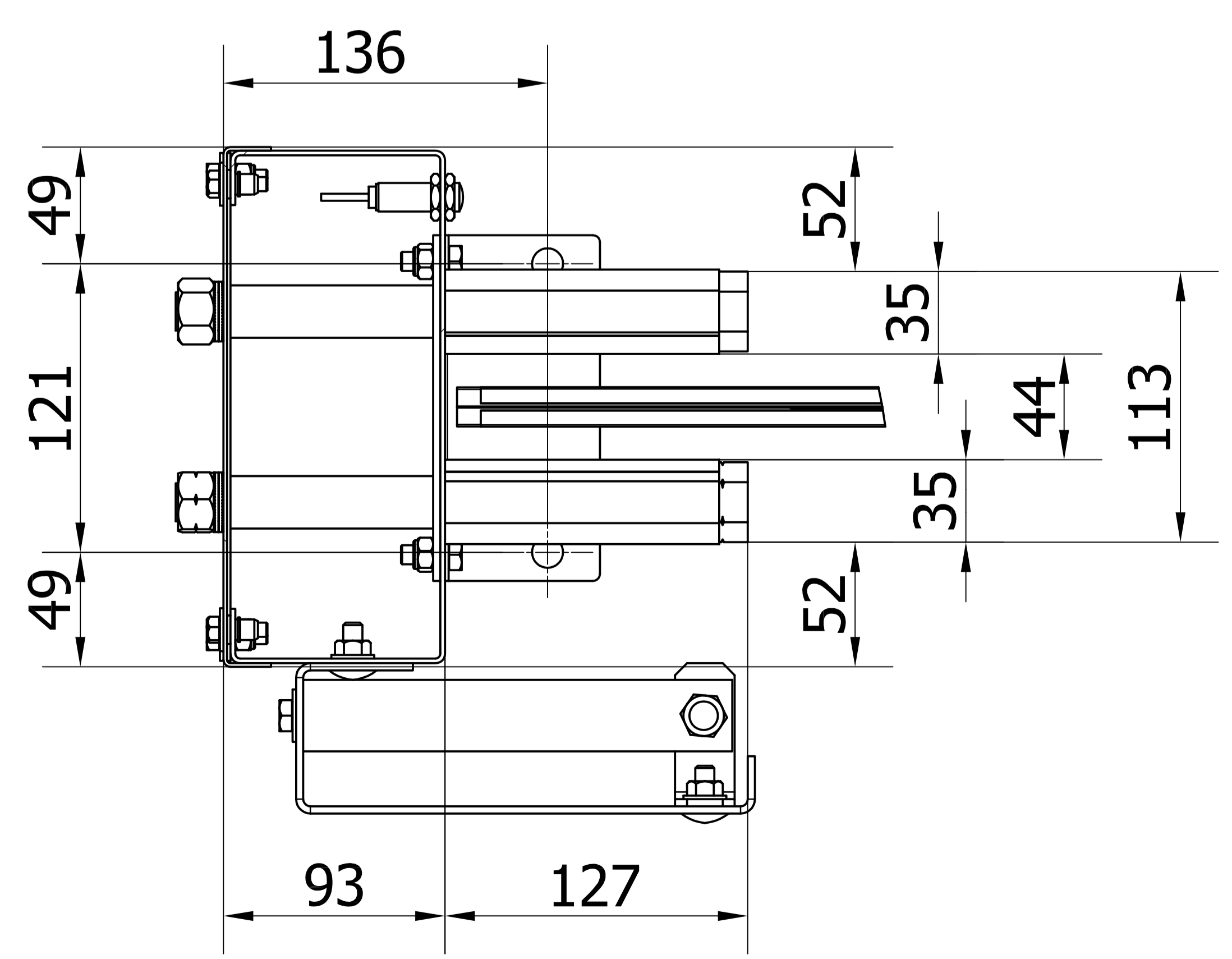
A-A



- * 400V 3-phases or 230V 3-phases
- * Door supply cable : square 4G2.5 3 phases + earth without neutral
- * Head circuit breaker
- * Either 16A curve C or 10A curve AM

ABS CONTROL BOX HEIGHT = 190
 HINGES ON THE LEFT, LOCK ON THE RIGHT

Detail B floor fixing



KONE Roll
 STANDARD CURTAIN
 FLEXIBLE GUIDE
 SPACE REQUIREMENT

made by : grinandjf	update on : update by : version :
Date : 27/06/2017	page : 1/1
Scale : fs	Paper Size : A2
Drawing sheet :	