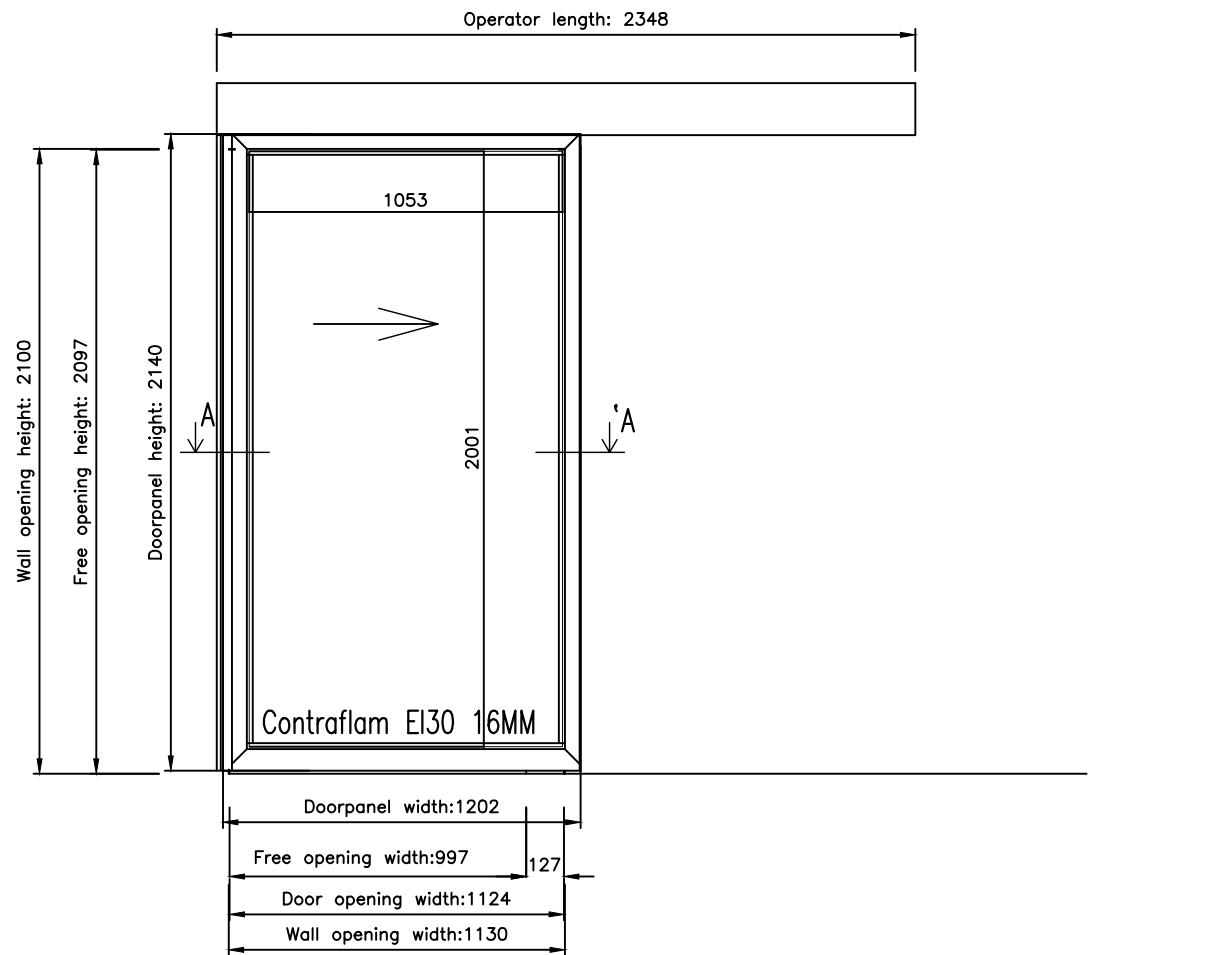
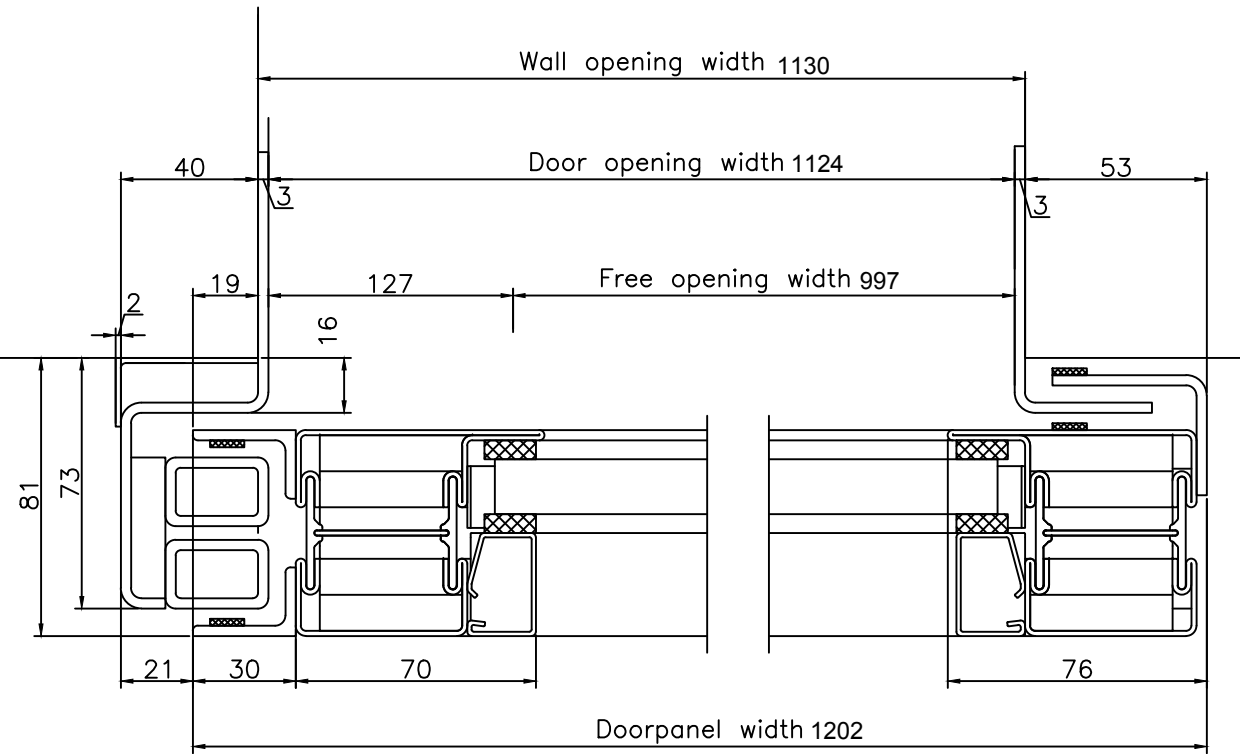
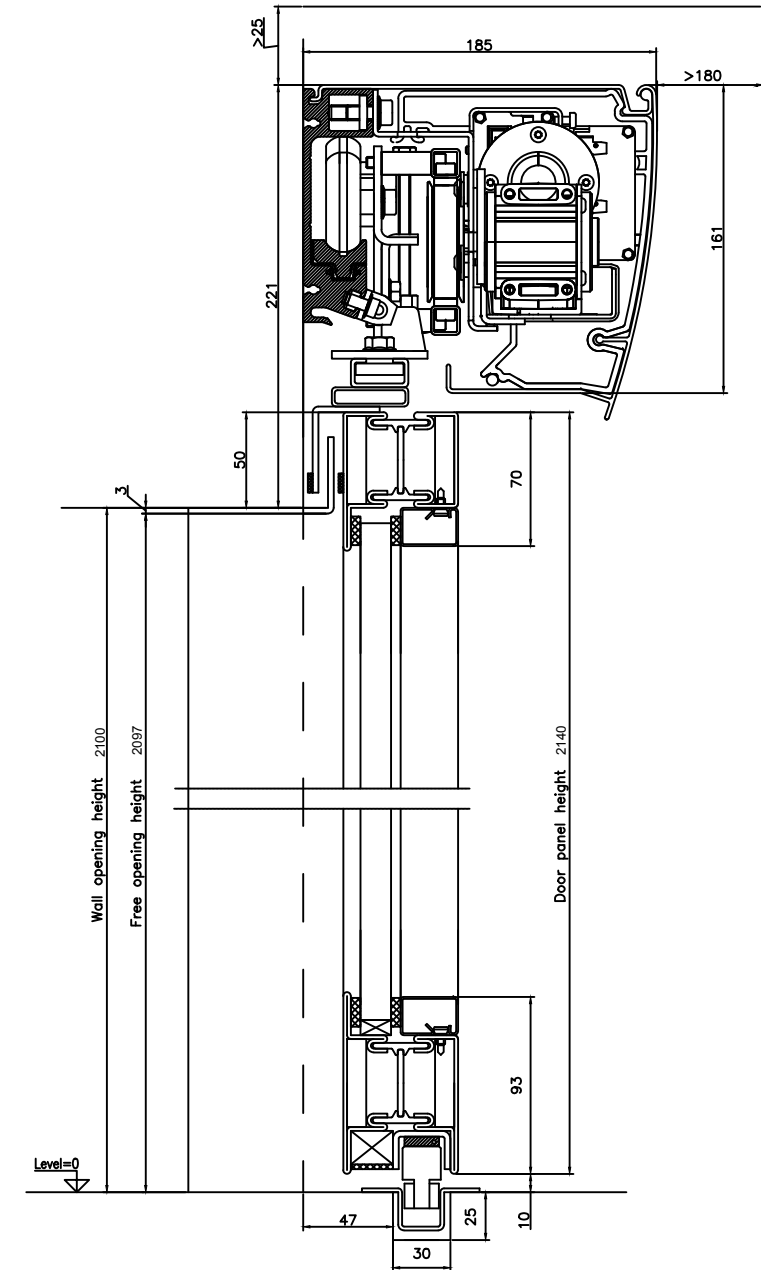
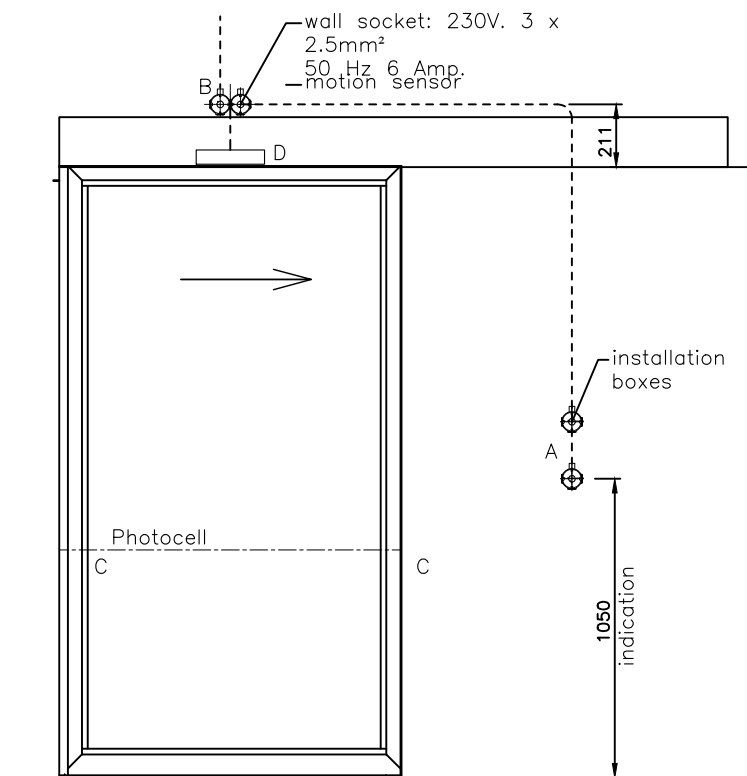


SECTION A'A



Electral installation schedule



position	device	symbol
A	push button, 4 x 0.34mm <sup>2</sup>	
A	domed push button, 4 x 0.34mm <sup>2</sup>	
A	push button 2-positions, 4 x 0.34mm <sup>2</sup>	
A	key switch, 4 x 0.34mm <sup>2</sup>	
A	pull switch, 4 x 0.34mm <sup>2</sup>	
A	elbow push switch, 4 x 0.34mm <sup>2</sup>	
A	PGS wired UTP Cat5, 8 wires Ø0,5mm	
B	wall socket: 230V, 3 x 2.5mm <sup>2</sup>	
C	photocell incl. cable	
D	motion sensor incl. cable	

other implementable electrical devices	
INPUT:	- intercom
	- fire alarm system
	potential free contact switch
OUTPUT:	- bel switch  24V
	- alarm system  24V
	Imax. = 400mA

Glass measurements in m		
	WIDTH	HEIGHT
DOORWING	1053	2001

Title: KONE SD80-S		Copyright by Kone	
Order number:	Page no:	Projection ISO-128	
Date:	Scale: --		
Drawn by:	Paper size: A3	REV.NO.:	
		A:	
		B:	
		C: --	
Accustraat 21 Postbus 94 3900 AB Veenendaal tel. : 0318 - 532333 fax : 0318 - 532339			